

Stud-mounted fuses



Catalog symbol: ACK-__

Description:

Bussmann® series stud-mounted fuse.

Specifications:

Ratings

- Volts - 130 Vdc (or less)
 - 130 Vdc - (10-100 A)
 - 72 Vdc - (120-200 A)
 - 48 Vdc - (225-300 A)
 - 80 Vdc - (400 A)
- Amps - 10-400 A
- Interrupting rating - 10 kA

Agency information

- UL® Recognized 15-300A, Guide JFHR2, File E56412

Features:

- These fuses avoid needless openings from starting currents or surges
- A fuse link which operates only on very high overloads or short-circuits
- Thermal cutout functions on low overloads – the thermal cutout cannot operate quickly at any load, hence long timelag is obtained on high overloads of short duration
- This long time-lag also makes it unnecessary to use extra large size or over-size fuses

Catalog numbers (amps)			
ACK-10	ACK-40	ACK-100	ACK-200
ACK-15	ACK-50	ACK-120	ACK-225
ACK-20	ACK-60	ACK-140	ACK-250
ACK-25	ACK-70	ACK-150	ACK-300
ACK-30	ACK-75	ACK-160	ACK-400
ACK-35	ACK-80	ACK-175	—

Test specifications

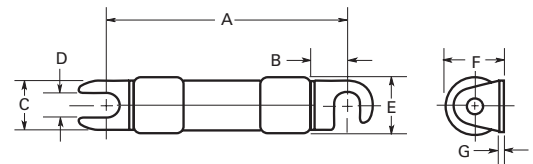
Fuse	Load	Opening time
ACK	200%	100 Seconds*
	300%	35 Seconds*
	500%	13 Seconds*

*Approximately.

Recommended fuse blocks:

Catalog number	Block number	Catalog number	Block number
ACK 10-30	4228	ACK 120-200	3569
ACK 35-60	3411	ACK 225-400	3578
ACK 70-100	2322		

Dimensions - in (mm):



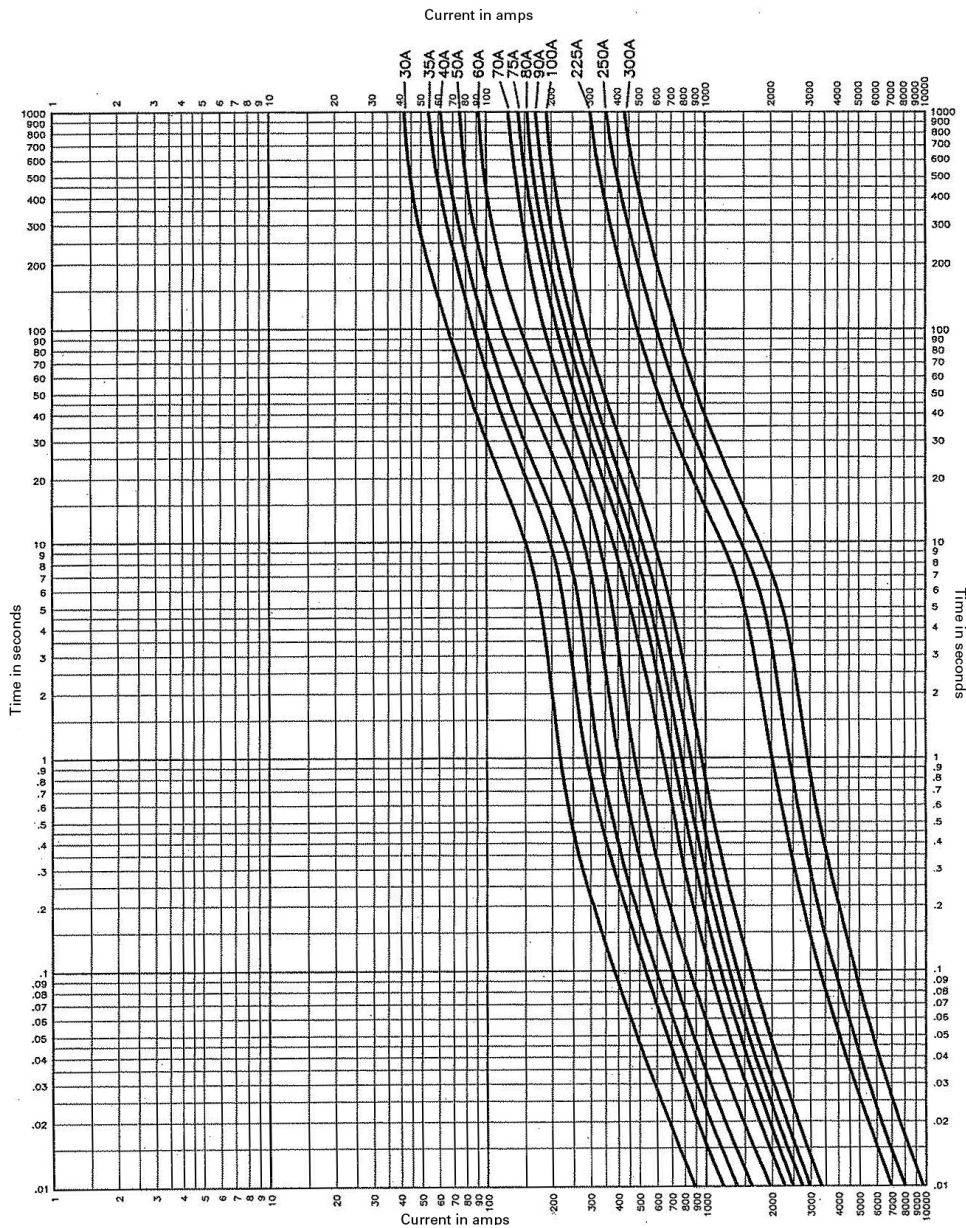
Catalog number	Dimensions in inches and (mm)			D	E	F	G
	A	B	C				
ACK 10-30	2.5" (63.5)	0.375" (9.53)	0.500" (12.70)	0.250" (6.35)	0.557" (14.15)	0.588" (14.94)	0.031" (0.79)
ACK 35-60	3.0" (76.20)	0.470" (11.94)	0.685" (17.40)	0.344" (8.74)	0.812" (20.63)	0.860" (21.84)	0.051" (1.30)
ACK 70-100	3.5" (88.90)	0.547" (13.89)	0.750" (19.05)	0.312" (7.92)	1.062" (26.98)	1.15" (29.21)	0.050" (1.27)
ACK 120-200	3.750" (95.25)	0.750" (19.05)	0.750" (19.05)	0.375" (9.52)	1.062" (26.98)	1.15" (29.21)	0.050" (1.27)
ACK 225-400	3.750" (95.25)	0.610" (15.49)	0.750" (19.05)	0.312" (7.92)	1.062" (1.062)	1.125" (28.58)	0.050" (1.27)

Note: 10-60 amp fuses use brass terminals and ferrules.
70-400 amp fuses use copper terminals and ferrules.

Catalog symbol	Dimensions in Inches and (mm)						
	A	B	C	D	E	F	G
ACK 10-30	2.5" (63.5)	0.375" (9.53)	0.500" (12.70)	0.250" (6.35)	0.557" (14.15)	0.588" (14.94)	0.031" (0.79)
ACK 35-60	3.0" (76.20)	0.470" (11.94)	0.685" (17.40)	0.344" (8.74)	0.812" (20.63)	0.860" (21.84)	0.051" (1.30)
ACK 70-100	3.5" (88.90)	0.547" (13.89)	0.750" (19.05)	0.312" (7.92)	1.062" (26.98)	1.125" (28.58)	0.050" (1.27)
ACK 120-200	3.750" (95.25)	0.750" (19.05)	0.750" (19.05)	0.375" (9.52)	1.062" (26.98)	1.15" (29.21)	0.050" (1.27)
ACK 225-400	3.750" (95.25)	0.610" (15.49)	0.750" (19.05)	0.312" (7.92)	1.062" (1.062)	1.125" (28.58)	0.050" (1.27)

Note: 10-60 amp fuses use brass terminals and ferrules. 70-400 amp fuses use copper terminals and ferrules.

Time-current curves – average melt



The only controlled copy of this data sheet is the electronic read-only version located on the Eaton network drive. All other copies of this document are by definition uncontrolled. This bulletin is intended to clearly present comprehensive product data and provide technical information that will help the end user with design applications. Eaton reserves the right, without notice, to change design or construction of any products and to discontinue or limit distribution of any products. Eaton also reserves the right to change or update, without notice, any technical information contained in this bulletin. Once a product has been selected, it should be tested by the user in all possible applications.

Eaton
1000 Eaton Boulevard
Cleveland, OH 44122
United States
Eaton.com

Bussmann Division
114 Old State Road
Ellisville, MO 63021
United States
Eaton.com/bussmannseries

© 2017 Eaton
All Rights Reserved
Printed in USA
Publication No. 1040 – SB98107
June 2017

Eaton and Bussmann are valuable trademarks of Eaton in the US and other countries. You are not permitted to use the Eaton trademarks without prior written consent of Eaton.

UL is a registered trademark of the Underwriters Laboratories, Inc.

For Eaton's Bussmann series product information, call **1-855-287-7626** or visit: **Eaton.com/bussmannseries**

Follow us on social media to get the latest product and support information.

